

Password Management for Windows

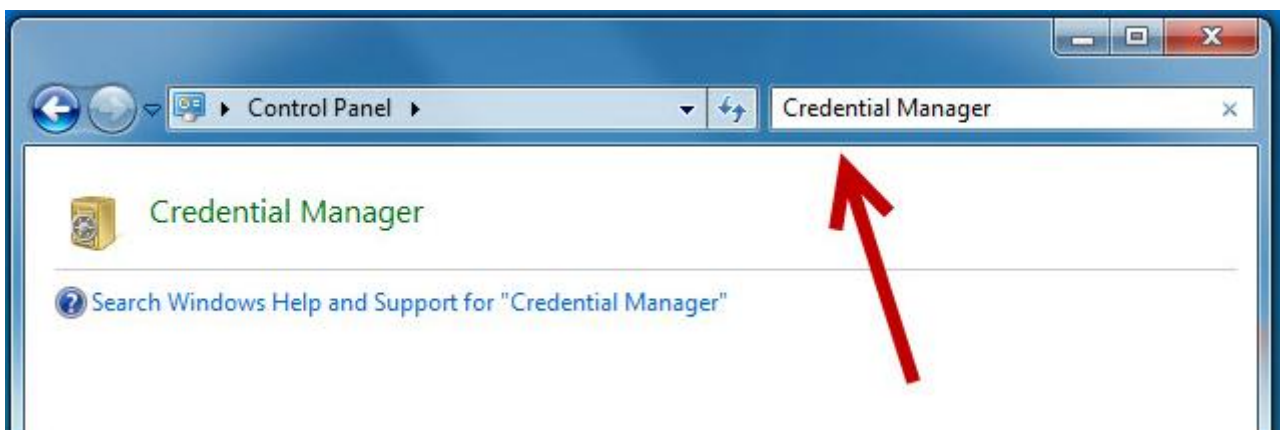


Dan Pucillo on January 28, 2020

1. The very first step in changing your password is to **Enroll** ^[1] **in the Password Management tool**.
2. Then **use the Password Management Tool** ^[2] **to change your password** and to unlock your account in case it gets locked out. Instructions here ^[3].
3. **Choose a password that meets our security requirements:** Password Complexity Requirements ^[4].
4. After you have changed your password using the Password Management Tool, **clear saved passwords for your UCSF ID** to prevent your account from being locked out.

Clear your saved passwords though the Windows Credential Manager:

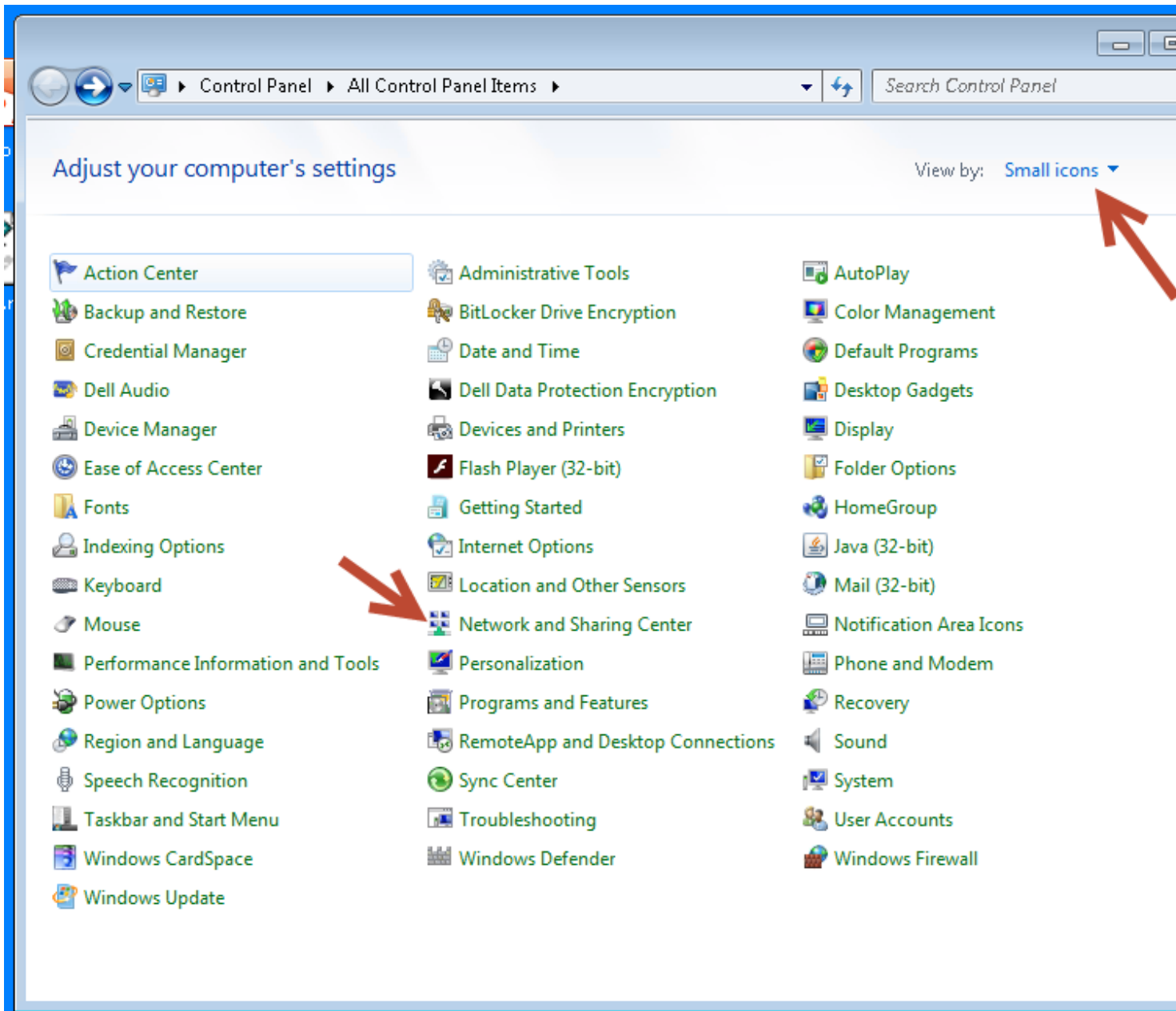
- Open Control Panel and search for "Credential Manager".



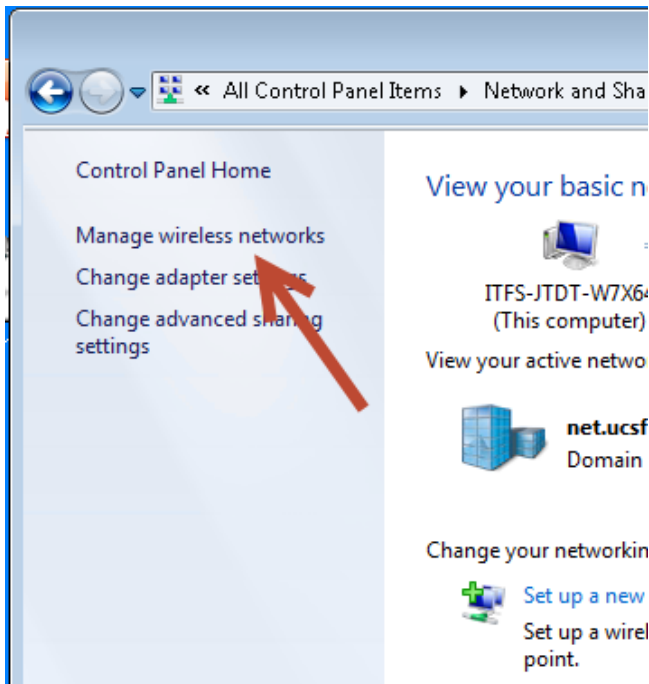
- Open Credential Manager and check if there's a password saved using your Active Directory account. Anything with ?Domain\Username? or First.Last@ucsf.edu [5] will need to be changed.
- Once you have cleared your cached credentials, you should be prompted to login to any application that uses your UCSF account credentials for authentication. This includes applications like Outlook, **but DOES NOT include UCSFwpa secure wireless; you must update your wireless password separately**, see next step.

5. To change the UCSFwpa Wireless Profile Password on Windows 7:

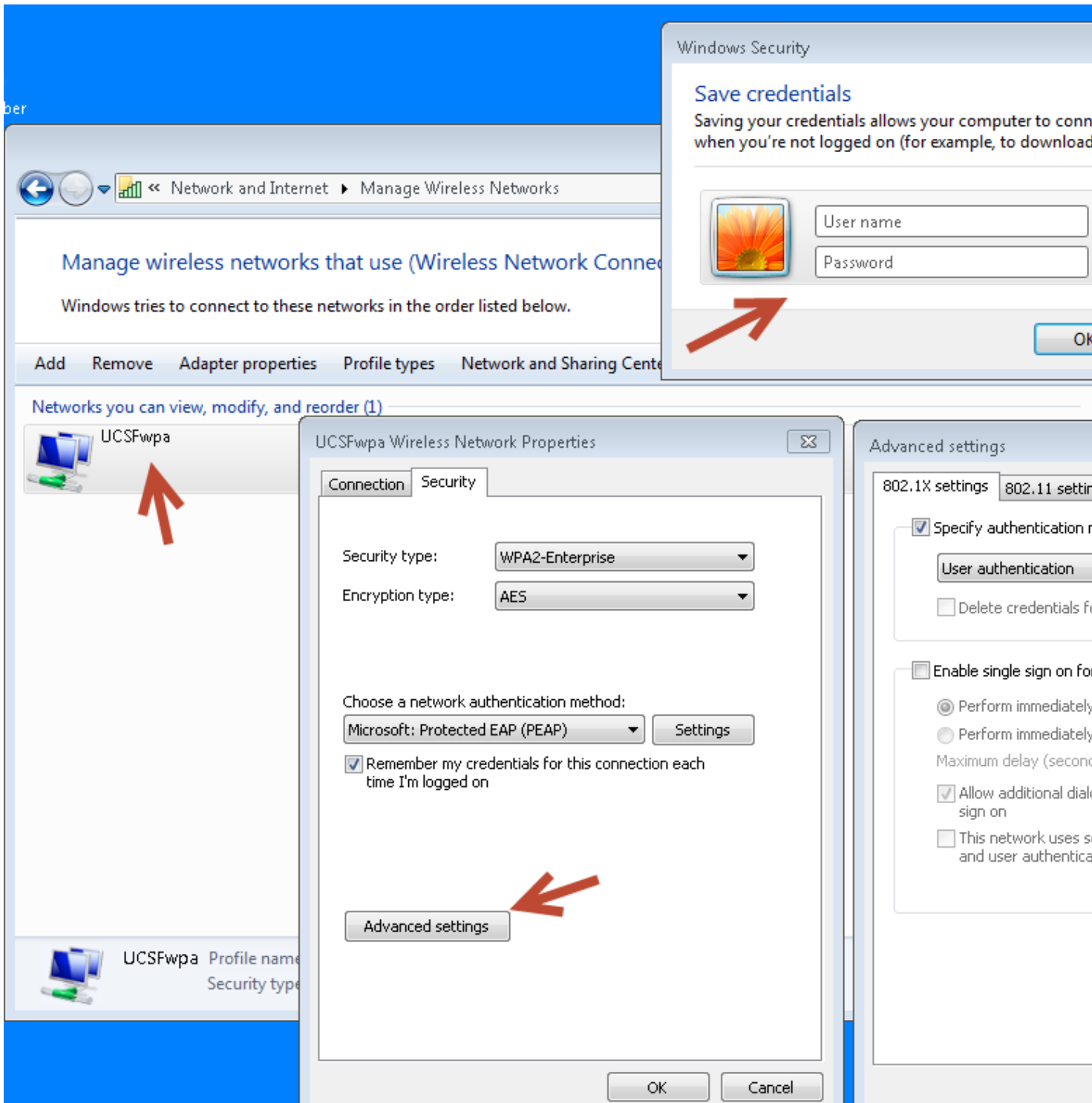
- Open **Control Panel**, and Click on "**Network and Sharing Center**" (If you do not see "**Network and Sharing Center**" please change "**View By**" to **Small Icons**)



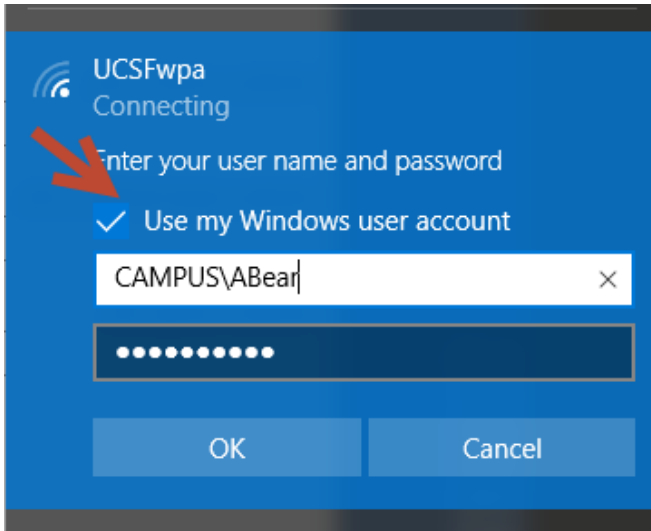
- Once in **Network and Sharing Center**, Click on "**Manage Wireless Network**"



- You will see a list of Wireless profiles that are stored on your system. Find and right click on **UCSFwpa** and select **Properties**.
- Click **Advanced Settings**, and then **Save Credentials**. Please input your new password, hit **OK** until you are out and make sure it connects.



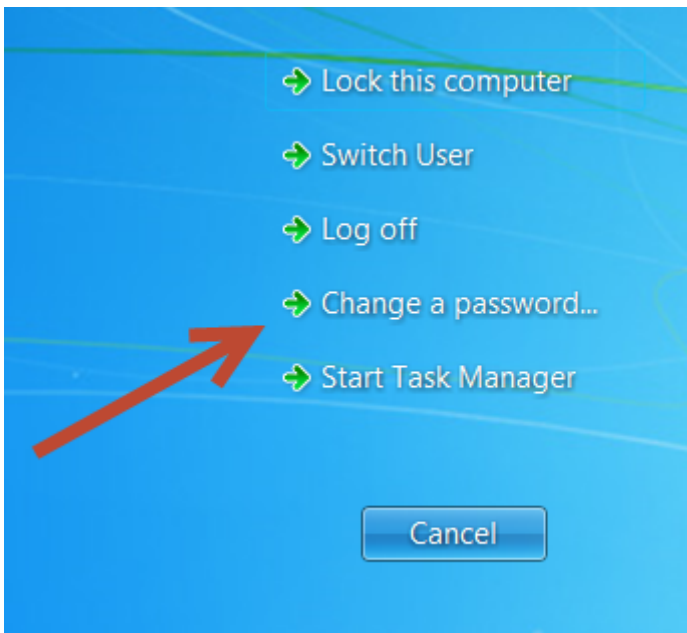
To change the UCSFwpa Wireless Profile Password on Windows 10: In Windows 10, there is no way to update the saved password for UCSFwpa. If your system cannot login to UCSFwpa because your password changed, it will prompt you for a new password. If you are using an IT managed device and log into the computer with your UCSF credentials (campus\username, ucsfmc\username), check the box for ?Use my Windows user account? when you login. This will force your wireless settings to use the same account you use to login to the computer with, so they will be automatically synced (and changed) going forward.



6. Other Applications - Please click here [\[6\]](#) for more instructions on changing the password for other application (Cisco Jabber, Pidgin, etc.).

7. Update your password on any other devices like smartphones that may also be storing it. Change it in every application that uses your UCSF ID. For example, if you use your iPhone to check your email and get on the UCSFwpa secure wireless network, you need to update the password for both separately. For more details: [iOS Password Change \[7\]](#) or [Android Password Update \[8\]](#).

Images





CAMPUS\abear

Old password

New password

Confirm password



Log on to: CAMPUS
[How do I log on to another domain?](#)

Cancel



[Control Panel Home](#)

Store credentials for automatic logon

Use Credential Manager to store credentials, such as user names and passwords, in vaults so you can easily access them to computers or websites.



Windows Vault
Default vault location

[Restore vault](#)

Windows Credentials

[Add a Windows Credential](#)

No Windows credentials.

Certificate-Based credentials

[Add a certificate-based credential](#)

No certificates.

Generic Credentials

[Add a generic credential](#)

No generic credentials.

See also

[User Accounts](#)

[Link online IDs](#)



Control Panel > All Control Panel Items >

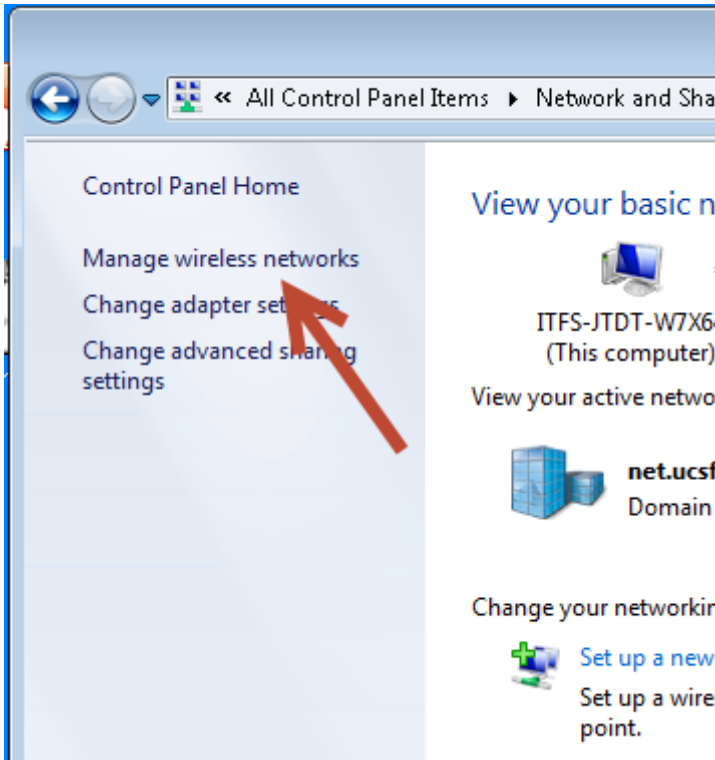
Search Control Panel

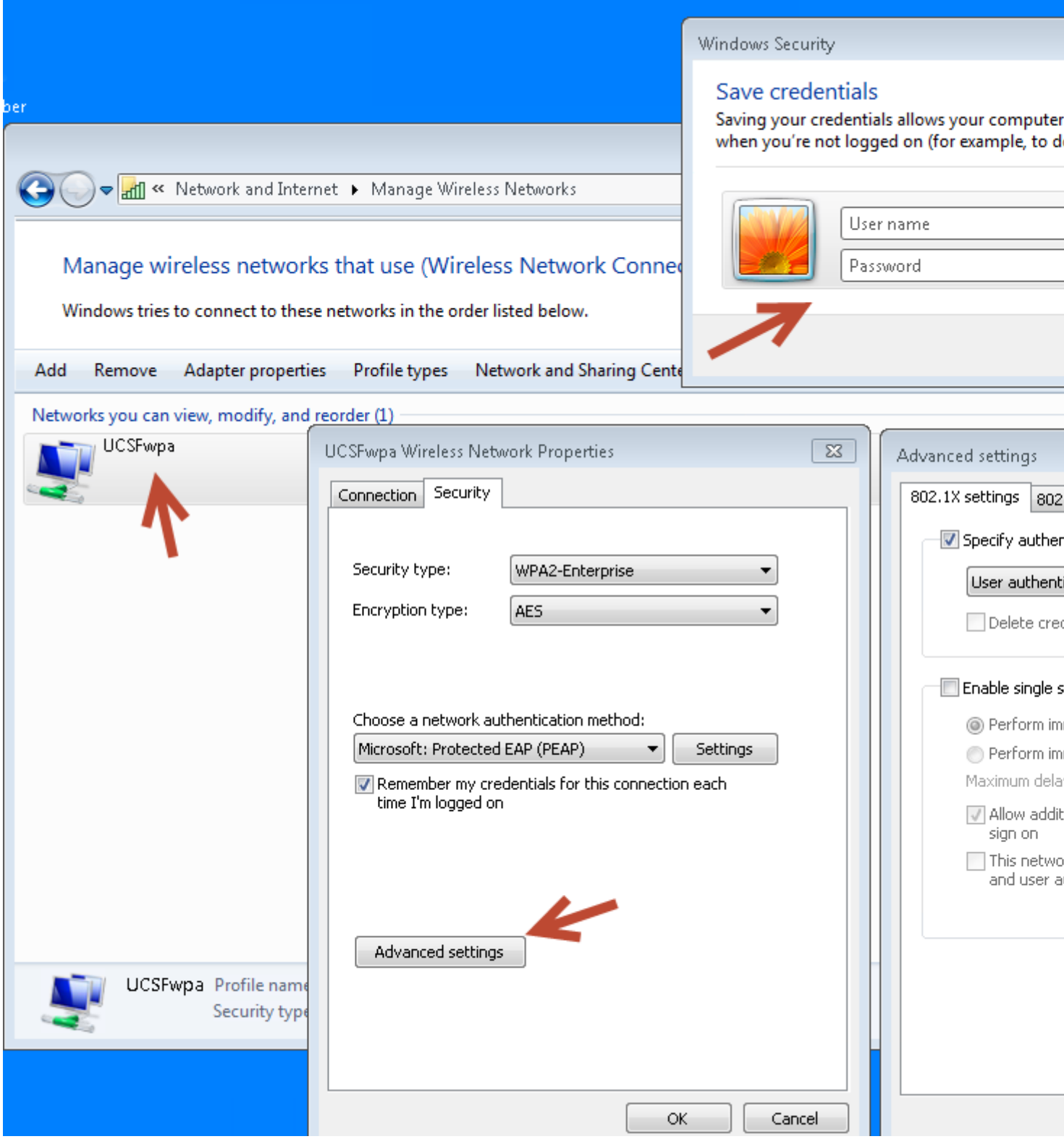
Adjust your computer's settings

View by: **Small icons** ▾

- Action Center
- Backup and Restore
- Credential Manager
- Dell Audio
- Device Manager
- Ease of Access Center
- Fonts
- Indexing Options
- Keyboard
- Mouse
- Performance Information and Tools
- Power Options
- Region and Language
- Speech Recognition
- Taskbar and Start Menu
- Windows CardSpace
- Windows Update
- Administrative Tools
- BitLocker Drive Encryption
- Date and Time
- Dell Data Protection Encryption
- Devices and Printers
- Flash Player (32-bit)
- Getting Started
- Internet Options
- Location and Other Sensors
- Network and Sharing Center
- Personalization
- Programs and Features
- RemoteApp and Desktop Connections
- Sync Center
- Troubleshooting
- Windows Defender
- AutoPlay
- Color Management
- Default Programs
- Desktop Gadgets
- Display
- Folder Options
- HomeGroup
- Java (32-bit)
- Mail (32-bit)
- Notification Area Icons
- Phone and Modem
- Recovery
- Sound
- System
- User Accounts
- Windows Firewall







ber

Windows Security

Save credentials

Saving your credentials allows your computer when you're not logged on (for example, to d



User name

Password

Manage wireless networks that use (Wireless Network Connec

Windows tries to connect to these networks in the order listed below.

Add Remove Adapter properties Profile types Network and Sharing Cente

Networks you can view, modify, and reorder (1)



UCSFwpa



UCSFwpa Wireless Network Properties

Connection Security

Security type: WPA2-Enterprise

Encryption type: AES

Choose a network authentication method:

Microsoft: Protected EAP (PEAP) Settings

Remember my credentials for this connection each time I'm logged on

Advanced settings



Advanced settings

802.1X settings 802

Specify authentication

User authentication

Delete credentials

Enable single sign-on

Perform im

Perform im

Maximum dela

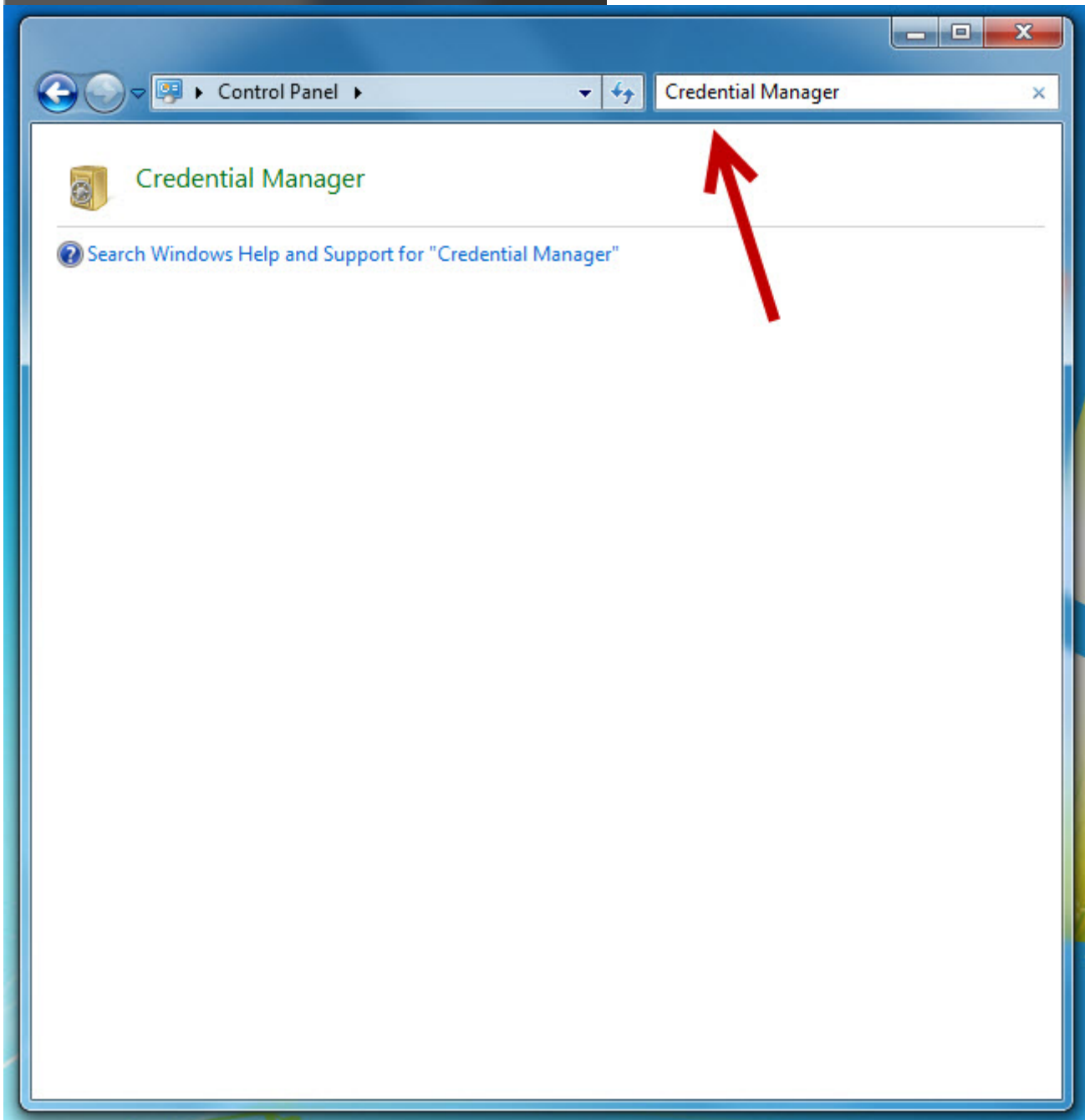
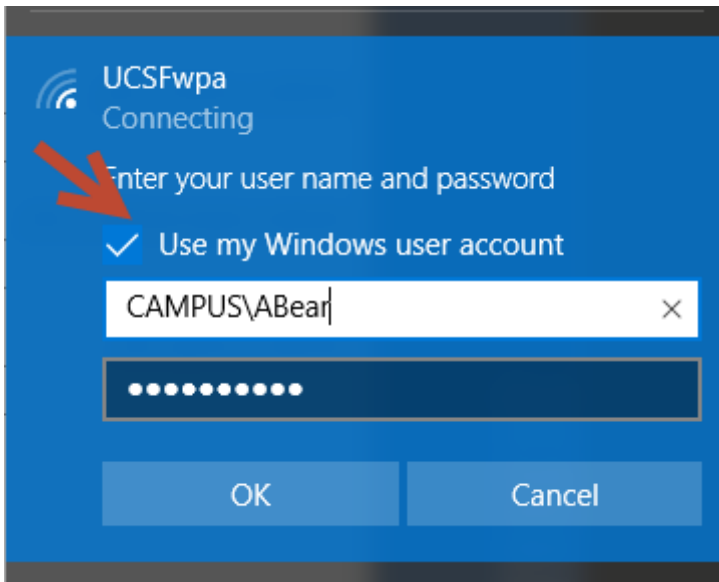
Allow additional sign on

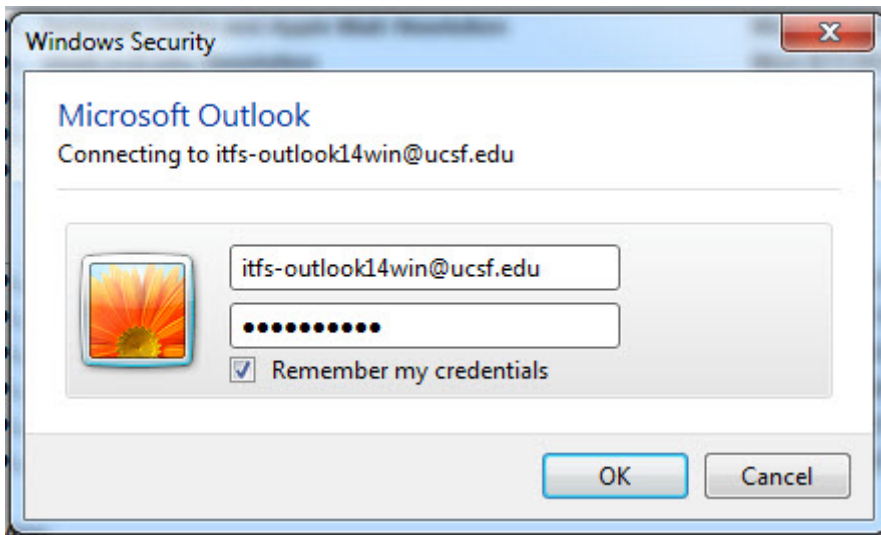
This network and user a

OK

Cancel

UCSFwpa Profile name
Security type





Related Page

Password Management for Mac ^[9]

GET IT HELP. Contact the Service Desk online, or phone 415.514.4100

[Site Login](#) [Site Index](#)

[Suggest an IT Improvement](#) | © UC Regents

*//-->

Source URL: <https://it.ucsf.edu/pages/password-management-windows>

Links

- [1] <https://it.ucsf.edu/services/ucsf-password-management-tool/additional/how-use-ucsf-password-management-tool>
- [2] <http://pwmanage.ucsf.edu/pm/>
- [3] <https://it.ucsf.edu/services/ucsf-active-directory-account-manager>
- [4] <https://it.ucsf.edu/policies/unified-ucsf-enterprise-password-standard-0>
- [5] <mailto:First.Last@ucsf.edu>
- [6] <https://it.ucsf.edu/pages/updating-your-password-jabber-windows>
- [7] <https://it.ucsf.edu/services/email-mobile-access/tutorial/ios-password-change>
- [8] <https://it.ucsf.edu/services/email-mobile-access/tutorial/android-password-update>
- [9] <https://it.ucsf.edu/pages/password-management-mac>