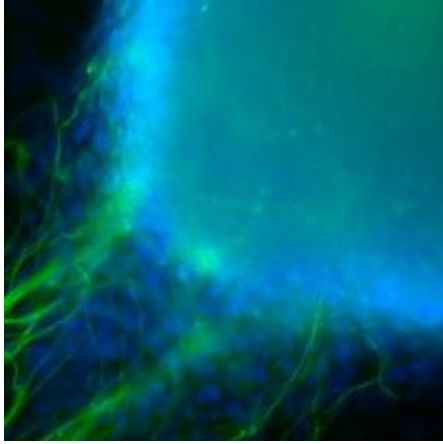


.ccsecure Files



Dejon Lewis on February 14, 2020

CipherCloud ^[1] is constantly scanning for UCSF PHI in the background, when it discovers UCSF PHI in a file, it encrypts the file and replaces the file with a file of the same name and a .ccsecure extension. Once a file has been encrypted, it cannot be searched or previewed because its contents can only be accessed by the CipherCloud agent ^[2].

For more details on what Cipher Cloud encrypts, please visit here ^[3].

Example

Original File: MyPatientData.xlsx

Encrypted File: MyPatientData.xlsx.ccsecure

To open your .ccsecure file, you will need to install the CipherCloud agent ^[2].

Required Service Information

UCSF Box ^[4]

GET IT HELP. Contact the Service Desk online, or phone 415.514.4100

[Site Login](#) [Site Index](#)

[Suggest an IT Improvement](#) | © UC Regents

*//-->

Source URL: <https://it.ucsf.edu/services/ucsf-box/additional/ccsecure-files>

Links

- [1] <https://it.ucsf.edu/services/ucsf-box/additional/ciphercloud>
- [2] <https://it.ucsf.edu/services/ucsf-box/additional/ciphercloud-agent>
- [3] <https://it.ucsf.edu/services/ucsf-box/additional/ciphercloud#encrypt>
- [4] <https://it.ucsf.edu/services/ucsf-box>