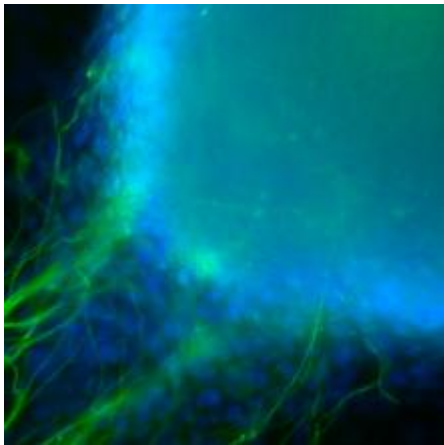


## Resource Account



Dejon Lewis on February 14, 2020

A resource account allows you to add collaborators and data to it without the worry of losing the data should any one collaborator leaves UCSF.

A resource account can be made for your group, but due to security reasons, you will not be able to log in to the resource account itself. You will need to submit a ticket <sup>[1]</sup> to **ITFS\_Engineering** with your group name and a list of collaborators you would like to have access to it. They will provide you with a resource account that will follow this naming scheme, *SVC-Box-groupname*.

### Required Service Information

UCSF Box <sup>[2]</sup>

**GET IT HELP.** Contact the Service Desk online, or phone 415.514.4100

[Site Login](#) [Site Index](#)

[Suggest an IT Improvement](#) | © UC Regents

*\*//-->*

---

**Source URL:** <https://it.ucsf.edu/services/ucsf-box/additional/resource-account>

#### Links

[1] <https://ucsf.service-now.com/ess/>

[2] <https://it.ucsf.edu/services/ucsf-box>