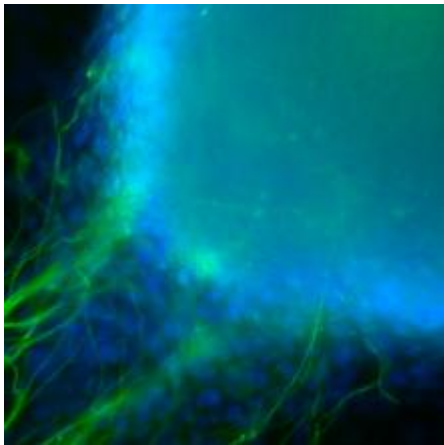


## Research Data Browser



Rhett Hillary on December 17, 2019

Research Data Browser

### What is the Research Data Browser

The Research Data Browser is a clinical data access and browsing tool for researchers. This online tool will allow you to explore APeX Data in a self-service manner. You will be able to search de-identified patient clinical records, view the resulting selection set by a range of parameters, and export the summary or detailed data to Excel or CSV Flat files for patient demographics, encounters, diagnosis, medications, labs, procedures, and more.

### Using the Research Data Browser

The Research Data Browser can be accessed from any device with Internet connectivity and runs in a web browser session. This service is available for use to the UCSF Community..

### Request Access to the Research Data Browser

Please complete the [Medical Center Account Request Form \[1\]](#) to request access to the Research Data Browser.

### How to Request Assistance

To request assistance with using this service, please email <sup>[2]</sup> the ITS ARS Support Team, call the IT Service Desk at 415-514-4100, or submit <sup>[3]</sup> a help ticket.

Request <sup>[1]</sup>

Faculty

Students

Staff

Information Technology Services

The Research Data Browser allows you to explore, view, and export de-identified APeX patient record sets, including demographics, encounters, diagnosis, medications, labs, procedures, and more.

**GET IT HELP.** Contact the Service Desk online, or phone 415.514.4100

[Site Login](#) [Site Index](#)

[Suggest an IT Improvement](#) | © UC Regents

\*//-->

---

**Source URL:** <https://it.ucsf.edu/services/research-data-browser>

#### Links

[1] <http://arf.ucsfmedicalcenter.org/>

[2] <mailto:its-arssupport@ucsf.edu>

[3] <http://help.ucsf.edu>